

BIG CHANGES  
COMING SOON!

JULY 2026 EDITION #61

FOREVER FREE



**Basketball gets an active start!**

Carlton Primary School students threw their hands in the air during a free before-school basketball clinic held at the school on June 25. The Players First Active Start Basketball Program, supported by Our Place, offered a come-and-try session for students, with Greens State MP Ellen Sandell also attending. *Photo: Hanna Komissarova.*

## School plans for Carlton's former Dan O'Connell Irish pub in doubt

“The future of the former Dan O'Connell Irish pub as a primary school looks uncertain, with the planning permit for the hotel's conversion set to expire in January while its owner is bogged down in investigations into allegations of abuse.”

WORDS BY  
JENNY DENTON



Fitzroy Community School bought the iconic 1912 turreted Edwardian hotel, reportedly for more than \$3.2 million, in 2020 after the pub shut down as a result of the pandemic.

The alternative school planned to open a primary campus for around 100 students in the building.

A permit for the pub's adaptation and use as "an education centre" was issued by the City of Melbourne in January 2022.

It has since been extended twice and varied slightly and is due to lapse in January 2027 if the renovation hasn't begun.

The permit will expire in January 2029 if the work hasn't been completed and the school started operating there.

Fitzroy Community School, founded in 1976 by former social worker Faye Berryman AO and her partner Philip O'Carroll in their North Fitzroy terrace, still operates out of the same Brunswick St house, as well as the property next door, and now has a second location in Thornbury.

The school has been run by the family for 50 years, with Ms Berryman's sons Tim and Nick, who grew up in the school, taking on roles as principal and teacher.

They have reportedly both since stopped teaching there, with Nick Berryman not currently registered as a teacher in Victoria.

Victoria Police said that allegations of sexual and physical assault at a school in North Fitzroy between 2009 and 2012 were being investigated by detectives from the Melbourne Sexual Offences & Child Abuse Investigation Team, with three men – a 54- and 55-year-old from Fitzroy North and a 48-year-old from Trawool – interviewed and released pending further enquiries.

*Continued on page 2.*

EDUCATION, PAGE 6

**Bid to save Graduate House in Carlton**

HISTORY, PAGE 11

**The unsolved mystery attached to historic East Melbourne home**



INNER CITY LOCAL, PAGE 12

**Carlton pastry chef earns global recognition**

Carlton-based pastry chef Hyoju Park has been recognised as one of the world's most promising pastry talents, receiving La Liste's Pastry Talent of the Year award.



# ANIMA Q

ANIMA Q is a contemporary Italian restaurant with a small, seasonal menu celebrating fresh, local ingredients.

166 Rathdowne Street, Carlton P. (03) 7300 6632 M. 0494 581 574 [animaq.com.au](http://animaq.com.au)

**HYPERLOCAL**  
NEWS

**CONTACT**  
Suite 208, 198 Harbour Esplanade  
Docklands 3008  
innercitynews.com.au  
Tel: 8689 7980

**EDITOR**  
Sean Car

**PUBLISHER**  
Hyperlocal News Pty Ltd  
ABN: 57 623 558 725

**ADVERTISING**  
Hyper-local print works for  
advertisers in our digital world  
because local people are  
interested in local news.

To sell to the inner-city community,  
contact Sean Car on 0460 896 115 or  
sean@hyperlocalnews.com.au

Reader contributions are welcome.  
Send letters, articles and images to:  
admin@hyperlocalnews.com.au

**The deadline for the August  
edition is July 31**

Opinions expressed by  
contributors are not necessarily  
shared by the publisher.

hyperlocalnews.com.au  
admin@hyperlocalnews.com.au

Follow us on social media  
by searching @innercity\_news



# School plan for former Dan O’Connell Irish pub in doubt

Continued from page 1.

The Berryman family have denied allegations of abuse made against them, many of which reportedly relate to acts of physical punishment that parents and former students claim were extreme and damaging.

The school told the ABC recently that it believed differing philosophies were behind the allegations because it didn’t subscribe to “permissive parenting”.

The school has also been subject to a recent “thorough investigation” by regulatory authorities, a Victorian government spokesperson said.

“Complaints from parents informed the investigations, which led to strict conditions on the school’s registration remaining in place today,” the spokesperson said.

These complaints were apparently the latest in a series made by former students and parents, with an earlier set of allegations relating to events in the 1990s previously investigated and dismissed by police and other regulatory authorities.

A Prahran legal practice is now advertising an information session in July for “abuse survivors” of the Fitzroy Community School, while several high-profile former parents vouched for its integrity to the ABC.

Meanwhile, the Dan O’Connell sits gathering graffiti.

Neighbour Michael Bula, who opposed the school’s application when it went before the council in November 2021, said he had noticed people recently coming and going from the building but hoped the plan to turn it into a school wouldn’t go ahead.

He considered the building totally inappropriate as a school for “a variety of reasons”, which he had listed in his submission to the City of Melbourne’s Future Melbourne Committee, Mr Bula said.



These included its location on a “very heavy traffic road” and at the intersection of busy bike paths, its reliance on a small, unfenced dog park for outdoor play space and the lack of adequate parking in the area for school pick-ups and drop-offs.

His objections previously “fell on deaf ears,” he told *Inner City News*.

However, minor variations were made and conditions attached to the application by the council as a result of the concerns raised, including the addition of height controls to classrooms to reduce noise and the reduction of student numbers from the proposed 110 to 85, and staff from 12 to 10.

Fitzroy Community School’s plan received ringing endorsement from councillors in 2021 although the school was subject to several investigations into breaches of COVID-19 restrictions at the time after it was found to be at the centre of a cluster of more than 60 cases.

Then-principal Tim Berryman told reporters he believed the physical risk of the virus to children was negligible compared to the risk to their mental health caused by isolation and fear.

The school declined to comment to *Inner City News* on its plans for the pub or any investigations it was currently subject to. ●

**INNER REAL ESTATE**

**FOR SALE**

1101/33 Batman St West, Melbourne

🏠 2 🛏 1 🚗 1  
\$470,000 – \$490,000

Gio Campagnaro  
0447 894 467

**FOR SALE**

901/7 Katherine Pl, Melbourne

🏠 1 🛏 1  
\$349,000

Matt Kunz  
0477 006 125

**FOR SALE**

801/35 Albert Rd, Melbourne

🏠 2 🛏 1 🚗 1  
\$590,000 – \$645,000

Anthony Cimino  
0400 500 903

**SOLD**

211/155 Bourke St, Melbourne

🏠 1 🛏 1  
\$350,000

Anthony Cimino  
0400 500 903

**FOR SALE**

3901/70 Southbank Blvd, Southbank

🏠 1 🛏 1  
\$419,000

Anthony Cimino  
0400 500 903

**FOR SALE**

2711/50 Albert Rd, South Melbourne

🏠 2 🛏 1 🚗 1  
\$579,000

Anthony Cimino  
0400 500 903

**FOR SALE**

1016/408 Lonsdale St, Melbourne

🏠 1 🛏 1  
\$280,000 – \$300,000

Gio Campagnaro  
0447 894 467

**SOLD**

705/8 Garden St, South Yarra

🏠 2 🛏 2 🚗 1  
Contact Agent

Anthony Cimino  
0400 500 903

Head Office – Inner Real Estate \ 138 Thistlethwaite Street, South Melbourne, Victoria 3205 \ 03 9804 5551 \ mail@ire.com.au \ ire.com.au

SALES | RENTALS | OWNERS CORPORATION

## Da Guido La Pasta enters its next chapter

After 10 years on Lygon St, Da Guido La Pasta is entering a new chapter, with owner Mirco Cossavella using the milestone to reimagine the Carlton restaurant while preserving the Italian hospitality at its heart.

WORDS BY  
SEAN CAR



The restaurant has recently completed a major renovation and refresh, transforming the venue into a more refined and contemporary dining room built around handmade pasta, an expanded wine program, Murano glass décor and a stronger connection to its Venetian heritage.

For Mirco, the 10-year anniversary marked more than a birthday. It represented the completion of a journey that began in the difficult period after COVID, when he started taking on greater responsibility for the restaurant before officially becoming sole owner in January 2025.

"The renovation wasn't simply about making the venue look newer," Mirco told *Inner City News*. "It was about creating a dining room that truly reflects the level of food and service we now offer."

"We wanted to build a genuine fine dining environment while preserving the warmth and hospitality that Da Guido has always been known for."

Mirco has been connected to Da Guido for many years, having led the kitchen as head chef since 2018. That meant the evolution of the restaurant was not about replacing its identity, but building on it.

"The goal was never to change the restaurant's identity," he said. "It was to build on its foundations and elevate every aspect of the experience."

"We still want every guest to feel like they're being welcomed into an Italian home, but now with the refinement, attention to detail and creativity of a modern fine dining restaurant."

The renovation includes Murano glass chandeliers and decorative pieces handcrafted in Venice and imported specifically for the venue.

For Mirco, those details are central to the story of Da Guido, whose original mother



restaurant has roots in Jesolo, near Venice, where Ristorante Da Guido has been welcoming guests for more than 30 years and is still operated by Guido's son.

"For us, they represent much more than decoration," Mirco said. "They create a direct connection between Melbourne and our Venetian heritage, reminding guests where our story began while giving the restaurant a timeless elegance that reflects our vision today."

On Lygon St, a precinct with one of Melbourne's richest Italian food histories, Da Guido is aiming to offer something distinct.

Mirco said the restaurant had enormous respect for the area's traditions but believed each generation should contribute something new.

"Our goal isn't to compete with tradition," he said. "It's to complement it by offering an experience that feels modern, refined and uniquely ours."

At the centre of that experience remains handmade pasta, supported by seasonal produce, local producers and an Italian-focused wine list.

The kitchen is now shaped by two chefs with experience in Michelin-starred venues, but Mirco said the influence was not about making food more complicated.

"The biggest lessons weren't about making food more complicated," he said.



"They were about discipline, consistency and respect for ingredients."

The kitchen also embraces a zero-waste philosophy, producing preserves, vinegars, kombucha, pickles and ferments in-house to maximise ingredients and build deeper layers of flavour.

Mirco said chefs Andres Serrano and Martim Coloni were central to that evolution, with Andres driving the kitchen's focus on discipline, sustainability, local producers, kombuchas, ferments, preserves and zero waste, while Martim ensures the kitchen runs smoothly day to day.

"Handmade pasta remains the heart of Da Guido," Mirco said, "but we present it with techniques and ideas that reflect modern Italian cuisine without losing the traditions that inspired it."

With its new look, Mirco hopes regulars

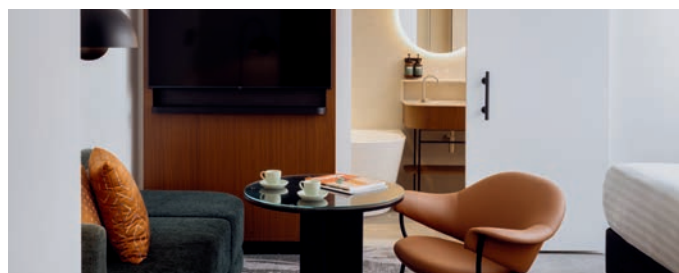
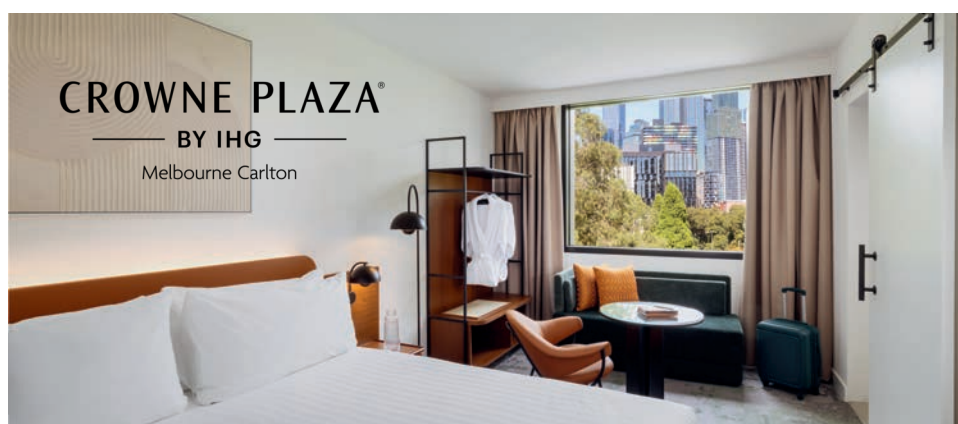


and new diners immediately sense that Da Guido is offering something different from the classic Lygon St restaurant experience.

"I want every guest to feel looked after from the moment they arrive," he said.

"For Carlton, I hope Da Guido becomes known as a restaurant that respects the precinct's incredible history while confidently contributing to its future."

Da Guido La Pasta is located at 130 Lygon St, Carlton. ●



Carlton is calling. Arriving soon, Crowne Plaza Melbourne Carlton is your new destination to explore, experience and savour the best of Melbourne. Whether it's a weekend stay, midweek work trip or an Italian feast at Fico, we're ready to welcome you.

BOOK NOW  
701 Swanston Street, Carlton  
[crownplaza.com/carlton](https://crownplaza.com/carlton)

# A helping hand out of homelessness



The City of Melbourne's investing \$2.3 million in homelessness initiatives as part of Budget 2026-27.

## For people experiencing homelessness, a pathway to stable housing often begins with something simple: a conversation.

"A huge part of our work is consistency. We keep showing up."

After 8 years working with people sleeping rough in Melbourne, Jessica has seen firsthand how trust is built slowly, one conversation at a time.

"Everyone is different and there's no one-size-fits-all approach. Sometimes a win is someone accepting a cup of coffee and being open to a chat after years of trying to build rapport," says Jessica.

Rain, hail or shine, Jessica's teams are in the city every day. As the coordinator of Launch Housing's Rough Sleepers Initiative and Daily Support Team, they're often the first point of contact for people experiencing homelessness.

In a typical month, the Daily Support Team speaks to more than 130 people across the City of Melbourne. They connect people with health services and crisis accommodation and pathways into longer-term housing.

Jessica says while the work can be challenging, it's deeply rewarding.

"The real beauty of the work we do is seeing people who have been entrenched in sleeping rough find a home after years of persistent engagement with the team."

"We got to know someone who had been sleeping rough for 10 years. He's now moved into safe, secure, long-term supported accommodation where he can stay for the rest of his life if he chooses. This amazing outcome came from years of engagement, relationship building and support from multiple people across the team."

For Jessica, stories like this are a reminder that the right care can change lives.

To help more people find a path out of homelessness, City of Melbourne is investing \$2.3 million in homelessness initiatives as part of Budget 2026-27.

The funding will help back 2 new programs: the Melbourne Outreach Team, delivered by Launch Housing and Ngwala Willumbong, and a new Safe Space Program led by VincentCare.

Led by Jessica, the new Melbourne Outreach Team will help people sleeping rough with referrals to crisis accommodation, supported housing and other essential services.

The service will also double the number of specialist frontline workers on Melbourne's streets and introduce a dedicated complex case manager to provide trauma-informed, long-term care.

"We want to ensure people experiencing homelessness get the care they need most, working alongside trusted partners with expertise in mental health, social services and trauma. Together, we believe we can make a real, positive difference in people's lives," Lord Mayor Nick Reece said.

Jessica says the complexity of homelessness means no single organisation can tackle it alone.



"It takes strong partnerships between outreach services, health providers, housing services and local government to create lasting change."

As part of this broader network, City of Melbourne Community Safety Officers (CSOs) also help connect vulnerable people with services across the city. Their numbers are set to double from 11 to 22 as part of Budget 2026-27.

CSOs are trained in trauma-informed engagement, mental health awareness, cultural safety, substance use and family violence awareness.

The path out of homelessness rarely begins with housing. More often, it starts with trust.

"Treating people with dignity and respect won't solve homelessness but it can make it more likely that people will feel comfortable reaching out for support," Jessica said.



The team connects people with crisis accommodation and longer-term housing. Photo: Launch Housing



KEEP UP TO DATE

Scan to read more stories that matter to Melbourne.



## Infrastructure plan puts focus on Carlton, Parkville and East Melbourne

The City of Melbourne's new 10-year Community Infrastructure Plan has identified early years services, flexible community spaces, open space and partnerships with major institutions as key priorities for Carlton, Parkville and East Melbourne.

WORDS BY  
SEAN CAR



The Community Infrastructure Plan 2026–36 was endorsed at the June 16 Future Melbourne Committee meeting, creating a city-wide framework for how the council will plan, deliver, partner and advocate for community spaces over the next decade.

While the plan applies across the municipality, its neighbourhood-by-neighbourhood approach highlights the different pressures facing established inner-city areas such as Carlton, Parkville and East Melbourne, where existing community assets sit alongside major institutions, heritage parks and increasing demand for shared local spaces.

The plan responds to Melbourne's continued growth, with the municipality's residential population forecast to exceed 292,000 by 2043, as well as a much larger daily population of workers, students and visitors.

City strategy director Jo Cannington told councillors the plan was a "first of its kind" for the City of Melbourne, bringing together the council's understanding of its community infrastructure assets with demand over time.

"It doesn't actually then go to implementation. That will be the next step," Ms Cannington said.

"This is our first step in, I think, a really exciting process."

Carlton and Parkville sit within the plan's north-east district, alongside City North and North Melbourne. The district is described as having a strong institutional presence and a generally well-served but unevenly distributed network of community spaces.

The most significant gaps identified for the north-east are in early

years services, flexible bookable spaces, local open space and community gardens.

For Carlton, the plan's four-year project pipeline includes implementing the Carlton Gardens Masterplan, with a focus on meeting broader regional needs while respecting the gardens' World Heritage values.

It also identifies longer-term opportunities to support future community needs for arts, cultural and bookable community spaces within existing facilities in Carlton, and to explore redevelopment of Carlton Baths in line with asset lifecycle planning.

That future redevelopment could include flexible community spaces, as well as land for organised and unstructured sport.

For Parkville, the plan points to both the importance of Royal Park and the influence of the growing health and education precinct.

The council will finalise the Royal Park Masterplan to guide future management and development, review existing pavilions for opportunities to improve function and accessibility, and prepare an advocacy position for health and wellbeing spaces as part of the Parkville Precinct Redevelopment.

The plan also identifies the need to respond to increasing demand for maternal and child health and family services in Carlton and Parkville, as well as early years education spaces in Parkville.

Longer term, the council will consider whether a community hub is needed in north-west Parkville to provide programs and services, including flexible community, health and wellbeing spaces.

Another major focus is

partnership. The plan says the council will work with universities and other institutions to provide broader community access to existing spaces, particularly for organised and unstructured sport, learning and bookable space.

That includes developing arrangements to support unstaffed and self-managed bookings by the community.

East Melbourne and Jolimont are grouped within the south-east district, alongside Southbank, South Yarra, the Domain Parklands and the sports and entertainment precinct.

The district is characterised by major regional open space and recreation assets, including the Domain Parklands, but also several ageing facilities and growing district-wide demand for early years and bookable spaces.

The plan's south-east project map identifies East Melbourne Library and Powlett Reserve Community Hub among existing local assets, while broader south-east priorities include increasing and improving open space and advocating for a new secondary school in the district.

Acting Lord Mayor Roshena Campbell, who moved an amended version of the motion, said the plan provided a "much needed reset" by creating a single framework for community infrastructure planning.

"For the first time, we will have a shared transparent view across the city of existing supply, current and future demand and the gaps that we need to address over time," Cr Campbell said.

The plan also commits the council to annual reporting and a full review every four years. ●

## Union launches petition against zoo cuts

The Community and Public Sector Union has launched a petition against a reported Zoos Victoria plan to cut 70 full-time jobs as part of a restructure of the statutory organisation.

WORDS BY  
JENNY DENTON



Zoos Victoria, which runs Werribee Open Range Zoo, Healesville Sanctuary and Kyabram Fauna Park as well as Melbourne Zoo in Parkville, has indicated it will cut 70 full-time jobs across all four facilities, which could mean 100 staff overall when part-time roles are included, according to the union.

CPSU secretary Jiselle Hanna said every part of the zoo, from conservation work to education and animal care, would be affected by the cuts, either directly or indirectly.

In addition, she claimed staff had been subjected to unfair stress over recent weeks because of a lack of transparency about the planned restructure, with some employees told they would be made redundant, only for that to change days later.

The union's online petition claimed that animal hospital admin staff who do community response and animal data entry work were being cut, with the work "pushed onto" vets.

Front-of-house staff were to be replaced with digital ticketing machines, it said, and education staff were being let go despite the importance of the zoo's school programs.

"Zoos are public assets, not money-making machines ... they only operate at a high standard for the public when they are invested in properly," Ms Hanna said, urging the public, especially members of the zoo, to sign the petition signalling "that decimating staff will not be tolerated".

Animal Justice Party MP Georgie Purcell, speaking in State Parliament, said Zoos Victoria had failed to confirm that emergency response and conservation programs, including those working with threatened species, would be exempt from the cuts.

A Zoos Victoria spokesperson said a consultation process was in progress and no decisions about the number or nature of roles to be cut had been finalised.

"We won't be commenting further until that process is complete," they said.

The organisation recorded a \$5.5 million deficit in its 2024-25 annual report, which showed that of an income of just under \$146 million, nearly \$93 million, or 63 per cent, came from the zoos' commercial operations last year.

Government and other grants made up just 26 per cent, with other sources such as sponsorships, grants and donations adding another 10 per cent.

Employee costs were shown at \$85.6 million, or 66 per cent, of Zoos Victoria's overall service delivery cost of \$128 million for the financial year.

"Strong commercial approaches to secure financial sustainability" was listed as a component of the organisation's vision. ●

CHRISTMAS IN JULY  
AT THE

# winter night market

PART OF THE *Winter* SERIES

SEE  
WHAT'S  
HAPPENING



**JUN 03 —  
— AUG 26**  
**WEDNESDAYS  
5PM — 10PM**

 [thenightmarket.com.au](http://thenightmarket.com.au)

**QUEEN  
VICTORIA  
MARKET**

# Graduate House fight marks historic milestone

As the Graduate Union prepares to mark more than a century since its founding and 64 years since Graduate House opened in Carlton, members are also mobilising to save the Leicester St college from closure amid concerns its loss would dismantle a rare academic community.

WORDS BY  
JENNY DENTON



Members of the independent Graduate Union of the University of Melbourne are gearing up to mark the anniversaries of its creation and the opening of its unique accommodation half a century later.

They are also forming a group to fight to save 64-year-old Graduate House, the closure of which would mean losing an incredible community, environment of cross-pollination and of academic encouragement, they say.

PhD student Edith Spiers joined the Graduate Union (GU) and moved into its Leicester St college, Graduate House, from regional Victoria in April last year.

Initially the microbiology student, who is researching malaria genomics, was focused on the practical benefits – not having to commute from the Macedon Ranges every day, getting 12 meals a week provided and living practically next door to the university.

“But then I came and met all these amazing people doing all kinds of things,” Edith said.

“There are people from all around the world, like every continent I would say, and you can talk to them over dinner and just learn all of this interesting stuff.”

“It’s completely awesome. I’m very attached to the community here.”

Established in 1911 with Colonel John Monash at the helm, the member-based Graduate Union of the University of Melbourne changed its name and status several times over its more than 100-year history but is now an incorporated association with more than 1300 members.

In 1962 it opened the first instalment of Graduate House – a row of seven connected terraces opposite the park in Leicester St known as Gladstone Terrace.

GU went on to acquire various adjacent and nearby properties, its real estate



▲ Edith Spiers, Harini Raghupathy, Bethia Blond, Jean Meaklim, Maxine Cooper and DS Magid from Save the Graduate House Community group.  
Photo: Hanna Komissarova.

holdings nearly tripling in size, and its residential facilities expanding to include a dining room, bar, car park, garden, laundry, offices and function rooms, as well as increased accommodation.

It now has 145 rooms and hosts a range of lectures, meetings and events as well as public lunches.

Hosting regular lectures and events and accommodating not only students and researchers but also graduates who have moved into work and academia, the college has been a transformative place for many.

Playwright Jack Hibberd, Aboriginal activist Gary Foley and Reverend Tim Costello have been among those to give talks there.

Astrophysicist and Johns Hopkins University professor Colin Norman, who joined the GU in the 1960s, recently described the place as “exhibit[ing] an astonishing cross-pollination of ideas and cultures”.

“This fertile atmosphere has survived economic ups and downs, massive cultural shifts, and fierce political upheavals, and remains a strongly valued aspect of residential life at this great university,” he said.

International student DS Magid, a long-term resident of the college, said it was a “brains trust” and “the lifeblood of the Graduate Union”.

The first Edith knew about a proposal to close Graduate House was in an email that popped into her inbox in May containing FAQs for the coming annual general

meeting.

At a special meeting in 2025 and in its two latest annual reports GU’s governing council had discussed how their efforts to pursue a redevelopment of the accommodation had morphed into a plan that would see Graduate House demolished and the land leased out to another entity.

However, the news had passed by many members.

DS Magid, who was aware of it, said there had been a lack of transparency from the governing council when it came to evidence for the need for their plan that “begins to look like a systematic disenfranchisement of the membership, at least over the past three years”.

In the FAQ email the closure of Graduate House was presented as *fait accompli*.

The Graduate Union was \$12 million in debt, it said, and there were only two options to pay it off: either sell the organisation’s \$40 million worth of property or “proceed with the Gladstone project” to lease the land out long-term for a new development.

“The Graduate Union is going to change. First and foremost, residential services ... will likely cease at the end of 2027,” it said, noting that the ground lease arrangement would “flip the GU’s financial position from precarious to a more secure and stable state” and give it “a healthy investment fund”.

Edith had been vaguely aware of plans

for a major redevelopment of Graduate House to improve the accommodation and increase capacity.

The email about closing it came as a shock and an outrage.

“I was like, ‘how dare they!’ - at least in the way that they’re doing it,” she said.

Many at Graduate House had similar feelings.

“Even the idea of just selling the whole thing without any warning or further discussion - we just felt a bit devalued,” Edith said.

The result has been the creation of the group Save the Graduate House Community, which is hoping to get the association’s rules changed to ensure that the governing council can’t take further action without first putting it to the membership.

Meanwhile the Save group members are planning an event to celebrate the anniversaries of the Graduate Union on July 14, 1911, and Graduate House on July 13, 1962.

At the very least there will be a cake, they say.

Asked if their opposition isn’t just a case of NIMBY-ism, Edith acknowledges that with the Graduate House buildings run down, the situation does need to change.

“And I certainly don’t think more student housing is a bad thing,” she says.

“It’s just – who controls that student housing? Is it another private company or is it a charitable organisation that is actually actively creating a community, which is in my opinion, the most valuable thing?”

For Graduate House champion Magid, the proposal makes no sense at all.

“Without Graduate House, GU would be a very cash-heavy organisation that has forsaken its ideals and purpose,” she said. ●



## East Melbourne rentals fall short: new report

Research from La Trobe University has found rental properties in East Melbourne ranked among the lowest in Victoria for compliance with minimum standards.

WORDS BY  
DANIEL GAWNE



soundness, toilets, ventilation, vermin-proof bins, window coverings and windows.

Across the audited properties, the two standards with the lowest compliance were mould and damp, at 73 per cent, and bathrooms, at 79 per cent.

In East Melbourne, only 40.38 per cent of audited rental properties complied with the minimum standards. The suburb recorded the ninth-lowest compliance rate in Victoria, with only Thomastown, Lalor, Elwood, Craigieburn, Reservoir, St Kilda, Bundoora and Malvern East recording worse results.

A total of 52 properties were audited in East Melbourne, with mould and damp the main reason properties failed to meet the required standards.

The result makes East Melbourne something of an anomaly. Low rental property compliance was more common in northern and western parts of Victoria than in eastern and southern suburbs.

One possible factor in East Melbourne’s result is the age of its housing stock, with many audited properties located in older buildings.

By comparison, audited rental properties in Carlton recorded a compliance rate of 55.88 per cent, while Parkville recorded 73.33 per cent.

Across Victoria, the data showed compliance rates fell from 76.16 per cent in 2021

to 39.91 per cent in 2024, a drop of 43 per cent in three years.

However, Property Compliance Victoria sales director Craig Topp said the decline could be partly explained by changes in audit participation.

When the minimum standards legislation came into effect in 2021, Mr Topp said rental providers “who knew their properties would be fine” were more likely to agree to be audited first.

Providers who were less certain about their properties held off until later, meaning the data may be front-loaded with more compliant homes and could help explain the sharp decline by 2024.

The number of properties audited in East Melbourne was also relatively small, but further research is expected to provide a clearer picture.

Lead author Dr Anisur Rahman said he planned to investigate data from 40,000 audits, which would “give us a much better idea of the state” of rental compliance across Victoria.

He said he hoped to release that work “very soon”. ●

# Rebuilt Corkman meets cautious approval

“

The rebuilt Corkman Irish hotel, revealed when its scaffolding was removed in mid-June, has been met with cautious approval by the Royal Historical Society of Victoria (RHSV) despite the new building's concrete slab walls.

”

WORDS BY  
JENNY DENTON



The original 160-year-old pub, on the corner of Leicester and Pelham streets, was famously illegally knocked down in 2016 by developers Raman Shaqiri and Stefce Kutlesovski, who had bought it for \$4.76 million and planned to capitalise on the site.

Subsequent legal action saw the pair fined more than \$1 million for the demolition and jailed for 30 days for contempt after they failed to clean up the site and take steps to convert it into a temporary park as ordered by VCAT.

With legal action taken by the then-Minister for Planning Richard Wynne with the City of Melbourne and, separately, two angry former pub patrons and students at the nearby law school, Tim Staindl and Duncan Wallace, the developers were ultimately ordered to rebuild the form of the 1857 hotel.

Back in 2016 the Royal Historical Society



▲ RHSV Heritage Committee chair Ian Wight is impressed with the rebuilt pub's interwar-era tiles. Photo: Hanna Komissarova.

of Victoria had joined the widespread condemnation of the demolition, its president Professor Don Garden OAM expressing dismay and anger at the developers' disregard for the building's heritage and architectural values, for community views and the planning process.

Built in 1857, the Corkman or Carlton Inn was one of the oldest buildings in Carlton, the professor said, and "a classic example of gold-rush era Victorian construction".

The society called on the Victorian government to "vigorously pursue penalties, action and redress" that would send a clear message on the value of Victoria's cultural heritage.

A decade later, RHSV's heritage committee chair Ian Wight said the process since had been very long and drawn out and should never have come to the current situation.

Nevertheless, he was "reasonably pleased" with the replacement building so far.

While he had been concerned its tilt slab construction would give the façade "a very pasted on appearance" a sense of depth had been achieved on the windows and door openings, which were edged with

bluestone, he said.

"Would it be better if it'd been done in bricks and mortar? Yes, probably, but I think there has been a reasonable effort made to get some of the detailing right, and I think the overall impression is quite good," he said.

The heritage expert admitted to being very impressed with the building's external tiles, the interwar era of which reflected the fact that the pub had been reproduced to its state at the time it was demolished rather than its original form.

However, photos of its multi-storey empty interior were "a bit concerning".

"We don't know what's going to happen in that big empty box," he said.

The project's heritage architect John Briggs suggested the building's "modern structural system" offered the benefit of "significant flexibility internally", which would hopefully be useful to hospitality operators.

Mr Briggs was very happy with the efforts of the tile manufacturer, who had produced "luscious" hand-glazed tiles, the colouring of which involved some research and "poetic licence" given those on the pub in

2016 had been painted over.

He was also pleased with the stonemasons, renderers and window joiner who worked on the re-creation, and the dedication of "Ray" Shaqiri, who had become personally involved.

The architect was glad also that the result "seemed to be appreciated".

"There remains some debate among heritage circles as to whether reconstruction – even if authentic to the original – has legitimacy," he told *Inner City News*.

"I am confident that it does, and that the heritage overlay that applies remains justified, despite the wrinkle that now exists in the history of this site."

Mr Briggs said he considered the "entertainment" value of the project to be "the silver lining that [could] come out of bad decisions" that were made. ●

## SEE WHAT'S ON AND COMING UP AT THE EAST END THEATRES WITH SOME OF OUR TOP PICKS BELOW



### THE BOOK OF MORMON

Only until 19 July  
Princess Theatre

[thebookofmormonmusical.com.au](http://thebookofmormonmusical.com.au)



### WAITRESS

Now playing  
Her Majesty's Theatre

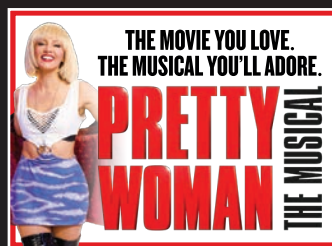
[waitressthemusical.com.au](http://waitressthemusical.com.au)



### PRIDE & PREJUDICE\* (\*SORT OF)

18 June - 11 July  
Athenaeum Theatre

[prideandprejudicesortof.com.au](http://prideandprejudicesortof.com.au)



### PRETTY WOMAN: THE MUSICAL

From 14 July  
Regent Theatre

[prettywomanthemusical.com.au](http://prettywomanthemusical.com.au)



### BLUEY'S BIG PLAY THE STAGE SHOW

1 - 12 July  
Comedy Theatre

[blueylive.com](http://blueylive.com)



### SIX THE MUSICAL

From 24 July  
Comedy Theatre

[sixthemusical.com.au](http://sixthemusical.com.au)



For Tickets & Show Information [MarrinerGroup.com.au](http://MarrinerGroup.com.au) | [hmt.com.au](http://hmt.com.au) | [athenaeumtheatre.com.au](http://athenaeumtheatre.com.au) | [EastEnd.Melbourne](http://EastEnd.Melbourne)  

# New powers target Carlton eyesore

“New state government reforms could give the City of Melbourne a stronger hand to pressure owners of long-vacant and derelict buildings to act, with Carlton’s former Cancer Council site among the most prominent local examples.”

”

WORDS BY SEAN CAR



The Local Government Legislation Amendment (Stronger Communities) Bill 2026, introduced to parliament in June, would amend the City of Melbourne Act 2001 to give the council more flexibility in how it applies differential rates.

Currently, the highest differential rate the council can set is no more than twice the lowest rate. The bill would increase that limit to four times the lowest differential rate, while retaining the city’s use of Net Annual Value as the valuation base for rates.

For residents in Carlton, the reform is likely to be viewed through the lens of several long-running problem sites, particularly the former Cancer Council building at 1 Rathdowne St.

The prominent corner site, opposite the UNESCO World Heritage-listed Royal

Exhibition Building and Carlton Gardens, has sat boarded up, vandalised and repeatedly breached by squatters since being sold to private interests more than a decade ago.

It remains on the market after being formally listed for sale last year, following years of failed development attempts and growing community frustration about vandalism, vermin and antisocial behaviour.

The 3106 sqm site was purchased in 2013 by Chinese billionaire Wang Hua for a reported \$21 million. A 13-storey residential tower proposal was rejected in 2022 on overshadowing grounds, while a proposed \$5 million interim upgrade in 2019 never eventuated.

The site has since become one of the clearest examples of what Lord Mayor Nick Reece has described as the city’s “worst eyesores”.

Cr Reece previously told *Inner City News* that the former Cancer Council building was “one of the great eyesores of the city” and said it was unacceptable for buildings to fall into such disrepair that they posed risks to the community.

The new bill responds to concerns raised by the City of Melbourne about vacant and derelict properties that have become unsightly, unsafe or magnets for vandalism and rough sleeping.

In a statement to parliament on June 18, Minister for Local Government Paul Hamer said the number of properties of specific concern to the council in 2026 was around 20 to 30.

The proposed differential rate settings are intended to give owners a stronger financial incentive to develop, clean up or otherwise improve neglected sites.

Acting Lord Mayor Roshena Campbell welcomed the reform, saying it would bring Melbourne into line with other councils across Victoria.

“Changes to the *City of Melbourne Act*

will finally bring our municipality in-line with all local governments across the state on how differential rates can be applied,” Cr Campbell said.

She said the measure was not about raising extra money for the council, but about changing behaviour.

“This does not generate any additional revenue for the council – but it does allow us to crack down on some of the city’s worst eyesores, while offering an incentive for others to do the right thing,” she said.

“We’ll explore how we can best use these changes over the coming months. We want to see sites like the Cancer Council cleaned up and redeveloped as quickly as possible so we have a city we can all be proud of.”

Another prominent local site is Albert Heights at 83–91 Albert St in East Melbourne, which remains on the market and has become a concern for residents due to reports of squatting and antisocial behaviour.

The former serviced apartment building sits near City Edge Apartments, another site residents have previously linked to drug activity, rubbish dumping and safety concerns.

Together, the buildings have contributed to growing local concern about the amenity and safety of the Albert St corridor, close to Fitzroy Gardens and Powlett Reserve.

In September last year, councillors backed a motion calling for a comprehensive review of how the council deals with vacant, unsafe or unsightly premises.

That review included consideration of the city’s Activities Local Law, graffiti management, planning and building enforcement powers, cost recovery options, demolition orders, interim green space and the use of differential rates, levies and charges.

While the new laws would not automatically resolve sites such as the former Cancer Council building or Albert Heights,



they would give the council a sharper financial tool to target owners who leave buildings vacant and deteriorating.

For local residents who have lived with boarded-up buildings, graffiti, squatting and safety concerns for years, the test will be whether the new rating powers can turn land banking from a passive strategy into an expensive one. ●

## FOR SALE



Enquire Today. Own Tomorrow.  
Discover Inner City living – from sleek apartments to smart investments.  
See these and more at [raywhitemelbournecity.com](http://raywhitemelbournecity.com) or scan the QR code.



517/74 Queens Road, Melbourne  
\$450,000 – \$495,000  
Tommy-Lee Davies

11/449-453 St Kilda Road, Melbourne  
\$900,000 – \$975,000  
Tommy-Lee Davies

44/187 Collins Street, Melbourne  
\$350,000 – \$380,000  
Ben Vu

509/118 Franklin Street, Melbourne  
\$265,000 – \$290,000  
Taylor Sims

1403/100 Harbour Esplanade, Docklands  
\$500,000 – \$550,000  
Daniel Milhe

2502/50 Albert Road, South Melbourne  
\$430,000 – \$470,000  
Daniel Milhe

403/39 Appleton Street, Richmond  
\$425,000 – \$465,000  
David Umana

10/60 Glass Street, Richmond  
\$900,000 – \$990,000  
David Umana

1/20 Valiant Street, Abbotsford  
\$535,000 – \$585,000  
Max Hui

34/350 Beaconsfield Parade, St Kilda West  
\$790,000 – \$865,000  
David Umana

104/4 Acacia Place, Abbotsford  
Under Offer  
Max Hui

Michael Pastrikos 0404 282 864	Jolene Tan 0466 366 041
Max Hui 0430 238 021	Lachie Kelly 0411 446 204
Tommy-Lee Davies 0416 823 173	Ben Vu 0422 284 216
Taylor Sims 0403 485 210	Daniel Milhe 0422 261 527
David Umana 0481 222 376	Zekria Tawafi 0411 577 970

[raywhitemelbournecity.com](http://raywhitemelbournecity.com)

03 8102 0200



Rainbow lorikeet. Photo: Andrew Allen.

## Bird flu threat raises urban wildlife fears

The likely local impacts of the H5N1 bird flu that has now reached Australian shores are “very hard to know” but could see our urban birds, including swans, parrots and owls, affected.

WORDS BY  
JENNY DENTON



Carlton-based environment group the Australian Conservation Foundation has joined urgent calls for the federal government to establish a \$200 million fund to help protect Australian wildlife from a potential bird flu outbreak.

The HPAI H5N1 virus, which was confirmed to have reached the Australian mainland on June 20, is a very serious threat to Australia's wildlife and biodiversity that could potentially threaten urban birds, the organisation says.

“We can't be certain how the latest strain of bird flu will affect urban species but the federal government's Threatened Species Commissioner Fiona Fraser has said all Australia's native birds and mammals are at risk from H5N1,” ACF nature campaigner Jess Abrahams told *Inner City News*.

A University of Western Australia study had found black swans to be particularly susceptible to H5N1, he said, and waterbirds that share

wetlands and lakes with other birds were believed to have a greater chance of picking up and spreading the virus, particularly through faeces.

Birds of prey and other carnivores were also at risk.

Since emerging in 2020 the current deadly strain of the virus, able to survive year-round in wild bird populations, has spread through Asia and Europe, North America, South America and most recently Antarctica, decimating birdlife and spreading to other wild and domestic species, including cows.

In Peru, it reportedly caused the death of around 40 per cent of all pelicans in less than five months.

Between a third and nearly a half (47 per cent) of all adult northern gannets, which are migratory birds, are estimated to have died from it in 2022.

On Heard Island, in Australia's Antarctic region, 13,000 baby southern elephant seals, around three-quarters of all pups, were killed by it last summer.

However, it wasn't inevitable that the virus would spread, unchecked, through wildlife populations around Australia, Mr Abrahams said.

There was still a chance it wouldn't be seen beyond the WA and SA coasts where it had been found in migratory seabirds.

In any case “a rapid and significant increase in funding ... to deliver conservation programs and on-ground resilience plans,” was crucial.

The emergency funding, also sought by the Australian Marine

Conservation Society, the Invasive Species Council and Birdlife Australia, would “equip wildlife carers, conservation groups, scientists and state and local governments to do whatever they can” to protect wildlife with the aim of “achiev[ing] and maintain[ing] healthy bird and wildlife populations by mitigating threats and disturbance”.

Asked about the potential impacts of the virus and its preparedness, Zoos Victoria said the Victorian Government had invested more than \$130 million since 2023 to boost the state's preparedness to respond to biosecurity threats such as avian influenza.

Victoria's environment department had interim plans in place to support land and species managers with biodiversity planning ahead of, and in response to, the detection of H5N1 in Victoria, it said.

The federal environment department said the government had committed more than \$113 million to preparing and protecting the nation against H5 bird flu.

The investment had significantly strengthened the nation's preparedness and response capability, Threatened Species Commissioner Dr Fiona Fraser said.

Anyone who sees five or more sick or dead birds anywhere in Victoria or a single dead seabird or sea mammal should avoid contact with the animals and report them to the Emergency Animal Disease Hotline on 1800 675 888, wildlife authorities and organisations say. ●

## Draft urban forest plan looks to protect Parkville's green character

Parkville's much-loved green character would be strengthened and made more climate-resilient under a draft urban forest plan set to go before the City of Melbourne on July 7.

WORDS BY  
SEAN CAR



The draft Parkville Urban Forest Precinct Plan is one of three new 10-year greening plans being considered by the Future Melbourne Committee, alongside draft plans for Southbank and Fishermans Bend.

The draft Parkville plan is proposed to proceed to community engagement through Participate Melbourne between July and August.

If approved, the final version would return to the Future Melbourne Committee in 2027, with implementation to begin after that.

The plan forms part of the City of Melbourne's broader Urban Forest Strategy, which aims to increase tree canopy cover across the municipality to 40 per cent by 2040.

Parkville already has one of the municipality's strongest urban forests, with canopy cover of 29.2 per cent. Since 2012, more than 15,600 trees have been planted in the precinct, and 13 major streetscape projects have been completed.

But the draft plan warns that even greener neighbourhoods face challenges from climate change, pests, disease and the slow loss of mature canopy.

Parkville's urban forest is defined by Royal Park, which gives much of the precinct its distinctive open woodland character. The plan describes the area as unique within the city, with four separate residential areas sitting around the edges of the park.

Royal Park's native and indigenous planting palette, diverse understory and less formal landscape strongly influence surrounding streets. At the same time, Parkville also contains important historic avenues, including large elm plantings along Royal Parade and Flemington Rd. ●

The draft plan says Parkville's urban forest is dominated by elms and native eucalypts, including red gums, yellow box gums and spotted gums, as well as she-oaks.

It also notes that Parkville has a relatively high proportion of indigenous and native tree species, reflecting the ecological and cultural significance of Royal Park.

Community feedback has shaped the draft vision for Parkville, which imagines an urban forest where indigenous trees and diverse plantings enhance biodiversity, Aboriginal and European heritage and community life.

The community also highlighted the importance of collaboration between Traditional Owners, residents, the University of Melbourne, the zoo, council and other land managers.

Key priorities include retaining Parkville's existing character, supporting biodiversity, expanding understory planting and identifying new opportunities around recently developed areas, including near the hospitals.

However, the plan also acknowledges that some trees central to Parkville's identity, including elms, are increasingly vulnerable to rising temperatures, pests and disease.

Elm leaf beetle and diseases affecting *Myrtaceae* plants are identified as particular risks for the precinct. To reduce the chance of large-scale tree loss, the plan proposes targeted species diversity and “species breaks” while maintaining local character.

The draft plan also identifies streets with low canopy cover and no recent planting as priorities for the next decade, noting that trees can take up to 20 years to provide significant shade.

Significantly aged avenues, many of which contribute strongly to Parkville's character, would require increasing levels of care and long-term planning as climate pressures intensify.

The council report says the three draft plans for Parkville, Southbank and Fishermans Bend have been informed by tree data, environmental risks, heat vulnerability, biodiversity opportunities, community preferences and Traditional Owner perspectives.

The estimated cost to deliver the three plans over 10 years is \$3.11 million, with funding to be considered through future annual plan and budget processes. ●

### Packaged liquor licence application

**We Lygon Mobile Repairs & Lotto Pty Ltd applied to Liquor Control Victoria (Application No 79187A01) on 6 May 2026 for the grant of a packaged liquor licence at 260 Lygon Street Carlton.**

Any person may object to the grant of this application on the grounds that:

- it would detract from, or be detrimental to, the amenity of the area in which the premises are situated, and/or
- it would be conducive to or encourage the misuse or abuse of alcohol.

An objection must state the reasons for the objection. All objections are treated as public documents.

**Objections must be made in writing to:**

Liquor Control Victoria  
GPO Box 4356 Melbourne VIC 3001

Objections must be made no later than 30 days after the date of this notice.

INNER CITY NEWS

Subscribe to  
our email for  
the latest news

Delivered monthly to your inbox



Scan the  
QR code  
to sign up



# Flower show extension sparks fresh Carlton Gardens concerns

A decision to extend the Melbourne International Flower and Garden Show's licence in Carlton Gardens until 2029 has reignited concerns about community consultation and the long-term protection of the World Heritage-listed precinct.

WORDS BY  
SEAN CAR



The event, one of Melbourne's major annual attractions, has long been contentious among local residents and heritage advocates due to its use of the Royal Exhibition Building and Carlton Gardens, which received UNESCO World Heritage listing in 2004.

While supporters argue the show brings colour, visitors and activity to the city, critics have consistently raised concerns about the impact of heavy foot traffic, temporary structures, machinery and repeated event use on the historic gardens, lawns and ageing trees.

EastEnders president Dr Stan Capp recently raised the issue at Town Hall, asking what process the City of Melbourne would follow in deciding whether to agree to an extension of the event's licence beyond 2026.

The existing licence, approved by council in September 2022, allowed the Melbourne

International Flower and Garden Show to use Carlton Gardens South for three years from 2024 to 2026, with an option to extend for a further three years from 2027 to 2029 by mutual agreement.

Dr Capp asked whether key stakeholders would be engaged before a decision was made, or whether, given publicity for the 2027 event was already under way, the decision had effectively already been taken.

In a written response, the City of Melbourne confirmed the option to extend had now been exercised.

"Following the Council Meeting of 2022, Council approved a licence for the Melbourne International Flower and Garden Show for the period 2024–2026, with an option to extend for a further three years (2027–2029)," the council said.

"The option to extend has now been exercised and the licence arrangements for 2027–2029 are in place. Confirming therefore that planning and promotional activities for future shows are under way."

The council said it noted concerns raised by Dr Capp and others and would "continue to work closely with event organisers and relevant stakeholders in the planning and delivery of future events".

But Dr Capp said the process appeared to have removed the opportunity for meaningful community engagement and, from what he could see, any formal consideration by councillors.

"This has all the elements of a poor process that seems to have eliminated any community engagement," he said.

"So much for the new community engagement policy."

The concern comes only weeks after the City of Melbourne adopted a new community engagement policy, which

councillors said was intended to make consultation clearer, more transparent and more meaningful.

That policy states that where there is limited opportunity for the community to influence an outcome, the council's role should be to inform the community rather than seek feedback.

For heritage advocates, the show's licence now poses an early test of how that policy will operate in practice.

The Carlton Residents' Association, Friends of the Royal Exhibition Building and Carlton Gardens, Protectors of Public Land Victoria and EastEnders have previously called for the show to be moved from Carlton Gardens, arguing that repeated use places too much pressure on the fragile World Heritage site.

In 2024, the Carlton Residents' Association proposed relocating the event to Birrarung Marr and reimagining it as a broader city flower festival.

At the time, then-environment portfolio chair Cr Rohan Leppert said the new licence contained "significant conditions and requirements" and that it would be unfair to rule out an extension before any event had been held under the new agreement.

But with the extension now exercised, local groups are again questioning whether one of Melbourne's most important heritage landscapes is being asked to carry too much. ●



# LINA backs urgent reforms to support local news

A national organisation supporting local and independent news publishers, which has just moved to Carlton, is ramping up calls for urgent changes to federal media bargaining reforms, warning that small newsrooms could again be left behind unless the proposed legislation is amended.

WORDS BY  
SEAN CAR



The Local and Independent News Association, known as LINA, is now based at 60 Leicester St in the Australian Conservation Foundation building, from where it continues its work advocating for local, independent and digital-first publishers across Australia.

LINA's arrival in Carlton is a welcome addition to a precinct already home to advocacy, education, community and civic organisations. But its presence is also a reminder of the national policy battle now facing smaller publishers, with the Federal Government's proposed News Bargaining Incentive seen as a critical test for the future of local public interest journalism.

LINA is a not-for-profit industry association supporting independent publishers, including Hyperlocal News, publisher of *Inner City News* and sibling publications *CBD News*, *Docklands News*, *Southbank News* and *North West City News*.

Founded in 2021 by the Community Broadcasting Association of Australia, LINA has grown into an important voice for media diversity at a time when local newsrooms continue to face major financial pressure



and digital platforms dominate advertising revenue.

Since its launch, LINA says there has been an acceleration in newsroom openings in Australia, with 37 per cent of its members formed since 2020 and the median age of member newsrooms now nine years.

Its emergence has coincided with a slowing in the net contraction of newsroom closures recorded by the Public Interest Journalism Initiative, highlighting the role independent publishers are playing in rebuilding local news.

But LINA and other media advocacy organisations are warning that the News Bargaining Incentive, while welcome, must be strengthened to ensure small and medium publishers receive a fair share of platform funding.

In a joint statement released on May 19, LINA joined organisations including

the Public Interest Journalism Initiative, Digital Publishers Alliance, Community Broadcasting Association of Australia, Independent Multicultural Media Australia and others in calling for amendments to the draft legislation.

The group said it welcomed the incentive as a mechanism to address disruption caused by digital platforms, adding that the news industry needed this revenue "without delay".

However, it warned the legislation in its current form risked unintended consequences that could further entrench media concentration and give global digital platforms undue influence over Australia's democracy.

Small, independent, multicultural and regional publishers, the statement said, were among the most vulnerable to market changes and economic pressure.

The organisations are calling for at least 25 per cent of all platform deals to be made with small and medium publishers with revenue under \$50 million.

They argue that, under the current draft, a platform could satisfy its obligation by striking deals with as few as four major media players, leaving smaller publishers excluded.

The joint statement also calls for a materially higher offset rate for deals with small and medium publishers, suggesting 200 to 300 per cent, to overcome the administrative burden platforms face when negotiating multiple smaller contracts.

A third reform relates to the distribution of any levy funds collected. While the groups support a simple and direct distribution model, they argue that a system based largely on full-time journalist numbers would reward incumbents and reinforce media concentration.

Instead, they are calling for 15 per cent of levy funds to be set aside for a supplementary grants program or alternative distribution mechanism for smaller and independent publishers supporting news deserts and underrepresented communities.

The changes, they argue, would not alter the structure or total obligation placed on digital platforms, but would make the scheme fairer and more effective.

"Australia's small, independent and regional publishers are pivotal to a thriving democracy," the joint statement said.

"These tweaks and amendments to the draft legislation will ensure this important sector survives and thrives into the future."

For Carlton, LINA's presence brings a national reform campaign with direct local relevance. For publishers like Hyperlocal News, and for the communities they serve, the outcome of the News Bargaining Incentive could help determine whether independent local journalism is given the chance not only to survive, but to grow. ●

## The unsolved mystery attached to one of Melbourne's most historic homes



Walking down Clarendon St in East Melbourne, the National Trust-owned Clarendon Terrace stands out for its Corinthian four-column portico and gold inscription.



WORDS BY  
HOLLY EAGLESHAM



▲ Police photograph of 210 Clarendon Street, taken the day after the murder. Photo: State Coroner's Office; Constable Maxwell Neilson, official police photographer.



▲ Police photograph of the kitchenette that the murder weapon was taken from. Photo: State Coroner's Office; Constable Maxwell Neilson, official police photographer.

While the whole building is for sale and appears from the outside to be a single grand residence, it is actually made up of three individual terraces.

Clarendon Terrace has been on the market since March 2024 and is currently listed at an indicative price of \$8.3 to \$9.1 million. The listing for 208-212 Clarendon St highlights its long history, from its 1857 construction to later housing the Menzies Foundation.

The agents spruik "its magnificent proportions, soaring ceilings, period details and marble fireplaces". But one piece of Clarendon Terrace's history is absent from the listing: its connection to a decades-old unsolved murder.

The Victorian Heritage Register emphasises Clarendon Terrace's "architectural, aesthetic, social and historical importance". But the building holds a more sombre significance for relatives of Ennie May Anderson.

Ian Scougall was only a child when his 78-year-old "Aunt Queenie" was stabbed in her small flat on the second floor of Clarendon Terrace, on October 29, 1961. Coroner J.W. Egan's 1962 report, obtained from the Public Record Office Victoria, finds she was "murdered by an unknown person".

The murder weapon was a carving knife taken from a fellow tenant's kitchenette and found in the laneway next to the terrace, according to the summary of evidence attached to the coroner's report.

Now in his late 70s, Mr Scougall remembers his great-aunt as "an avid churchgoer" and Hawthorn supporter. He says she was also "very much a royalist", recalling that she had gifted him a book about the coronation of Queen Elizabeth.

According to Mr Scougall, Anderson took over the lease of 210 Clarendon St as a boarding house manager, after the early deaths of her daughter and husband.

It was a common misconception that she owned Clarendon Terrace, with *The*

*Sydney Morning Herald* publishing a story about a "78-year-old woman who owned an East Melbourne residential", a day after the murder. Mr Scougall contends his great-aunt was "not unduly wealthy".

1960s East Melbourne was a far cry from what it is today. According to historian and author Dr Liz Rushen, who was one of the founders of the East Melbourne Historical Society, "a lot of single people lived there, and it wasn't considered desirable at all".

"Many, many of the old houses had been turned into rooming houses," Dr Rushen said.

The summary of evidence notes Anderson was subletting to 20 tenants and although she experienced some "domestic trouble",



▲ Clarendon Terrace on Clarendon Street, East Melbourne. Photo: Holly Eaglesham.

"it was no more than one would expect from an elderly lady running a large apartment house".

Mr Scougall recalls that "In those days nobody cared about security", and the back door to 210 Clarendon St was usually left open.

At the time, Anderson's grandson Phillip suspected she was murdered for money kept on her person, but the summary of evidence states that this was never verified.

Mr Scougall had witnessed this method of stashing money first-hand. He says Anderson offered to buy his family a new kettle after learning it had broken, and "pulled out the ten shillings ... from the top of her dress". He suspects it became habit "because she was scared of being bailed up in Melbourne in those days".

Visits to Clarendon Terrace since Anderson's death have left Mr Scougall to "wonder if they found anybody yet", with his own investigations proving fruitless. He chuckles while recounting a visit to the Victoria Police Museum where he attracted suspicion from authorities due to his interest in the case.

Though the murder remains unsolved, there has been speculation around the involvement of Sydney's infamous Granny Killer John Wayne Glover, as covered by *60 Minutes Australia*. "I have seen reports in

more recent years that he may have spent some time in Melbourne in that period ... but I don't think it's ever been proven," Mr Scougall said.

In the years following the tragedy the building became increasingly derelict and by 1977 owners Compac Ltd had obtained a permit to demolish it despite its heritage status, as outlined in Dr Rushen's booklet *Clarendon Terrace and her neighbours*.

Dr Rushen says protests from concerned locals and the Victorian branch of the National Trust, which was founded by residents of East Melbourne in the '50s, saved the building. Without their efforts, relatives of Anderson would not have had the chance to visit Clarendon Terrace after her death.

The National Trust took ownership of Clarendon Terrace with state government support, before coming to an agreement in 1980 that the Menzies Foundation would restore the building in exchange for peppercorn rent, according to Dr Rushen's booklet.

While acknowledging that Clarendon Terrace "stands on its own architecturally", Dr Rushen's interest is in retelling the history of residents like Anderson. Decades of National Trust stewardship has ensured that both the building and the stories it houses have been preserved. With its for sale listing on the private market, the future of Clarendon Terrace is now less certain. ●

## "Tree-thousand" greening milestone marked in Carlton

The City of Melbourne has planted its 3000th tree for the financial year, with a native River Sheoak taking root on Faraday St in Carlton.

WORDS BY  
SEAN CAR



The strategy aims to build Melbourne's urban forest year on year and double the city's canopy cover by 2040, creating cooler streets, more shade and stronger biodiversity in increasingly dense neighbourhoods.

Environment portfolio lead Cr Davydd Griffiths said the milestone represented an important investment in Melbourne's future.

"Three thousand new trees represent thousands of investments in Melbourne's greener, cooler future," Cr Griffiths said.

"It is fitting the three-thousandth tree is a native River Sheoak, a fast-growing species that thrives in urban conditions and provides food for birds, helping bring life of all kinds to our city streets."

The River Sheoak, or *Casuarina cunninghamiana*, is a native species known for its ability to grow quickly and tolerate tough urban conditions.

The council said the species was well

suited to the Faraday St site because it can tolerate the high pH and high salinity subsoil found in the area, as well as the hot conditions and reflected heat common in median strips.

As it grows, the tree will also produce cones that provide food for birds, adding to the ecological value of the street.

The Carlton planting follows a similar milestone last year, when the council marked its 3000th tree of the 2025-26 financial year with a Moreton Bay fig on Batman Avenue.

Earlier this year, councillors also helped plant a flooded gum at Market Street Park in the CBD as part of the same annual tree-planting push.

The council says every new tree contributes to a healthier and more resilient city by cooling streets, supporting biodiversity, improving amenity and helping Melbourne respond to the impacts of climate change. ●



INNER CITY LOCAL



## MCG redevelopment progresses amid Yarra Park concerns

The Victorian Government has appointed the lead design and engineering team for a potential redevelopment of the MCG, in a move likely to be closely watched by East Melbourne residents already contesting the future direction of Yarra Park.

WORDS BY SEAN CAR



Architectus, in partnership with Foster + Partners and MANICA, has been appointed lead designer for the MCG Redevelopment Business Case, while AECOM has been appointed engineering consultant.

The business case, which began in October last year, will examine the current state of the stadium and surrounding precinct, including the ageing Shane Warne Stand, which was built in 1992.

The appointed consultants will provide advice on planning processes, construction timelines and how a new stand could be delivered. The business case is due for completion in 2027.

Minister for Sport and Major Events Steve Dimopoulos said the work marked “an important step” for one of Australia’s most important sporting and major events venues.

“We are the sports and major events capital,” Mr Dimopoulos said. “This business case will help ensure we know what’s required to maintain the MCG’s place as one of the most iconic stadiums in the world.”

The government said community and stakeholder consultation would begin soon.

The announcement comes as East Melbourne residents continue to raise concerns about the final Yarra Park Master Plan, which is before the Planning Minister for approval.

The East Melbourne Group has warned the plan could “tip the balance” of Yarra Park too far towards commercial and event use, arguing it does not provide enough safeguards for local amenity or the park’s everyday role as public open space.

Residents have raised particular concern about permanent event-enabling infrastructure, lighting, services, gathering spaces and possible changes to the event approval framework.

Melbourne Cricket Club CEO Stuart Fox said the club looked forward to working with stakeholders as the next phase of planning progressed.

The MCG attracted more than four million attendees across 69 major events in 2024, generating an estimated \$720 million for the state economy and supporting 7500 full-time equivalent jobs. ●

## Carlton pastry chef earns global recognition

“ Carlton-based pastry chef Hyoju Park has been recognised as one of the world’s most promising pastry talents, receiving La Liste’s Pastry Talent of the Year award. ”

WORDS BY DANIEL GAWNE



The award celebrates emerging pastry chefs working across pastry shops, bakeries, tea rooms and dessert restaurants. La Liste, a French restaurant guide and ranking platform launched in 2015, is known for recognising leading restaurants and culinary talent around the world.

Hyoju said she was still in disbelief about the award, particularly given Madeleine de Proust is a small Carlton store, but said she was honoured by the recognition.

She is the co-founder and head pastry chef of Madeleine de Proust, a patisserie and creative studio at 253 Lygon St, which she runs with her partner Rong Yao

Soh. The pair trained together at culinary school in London before opening their Carlton store.

As its name suggests, Madeleine de Proust specialises in madeleines, but with a creative twist.

Traditionally, the madeleine is a small French sweet with a distinctive seashell shape, sitting somewhere between a sponge cake and a cookie. Made from a simple mix of butter, flour, eggs and sugar, it was also the first thing Hyoju learned to bake when she was young.

At Madeleine de Proust, Hyoju said the team “break the rules” of the classic madeleine and show how the pastry “can be elevated”.

The menu features madeleines in a wide range of flavours, fillings and coatings, alongside French butter cookies, Bordeaux canelés and a variety of financiers.

The patisserie also offers a madeleine tower: a sculptural centrepiece made entirely from madeleines.

Following her La Liste recognition, Hyoju said there was plenty on the horizon for both herself and Madeleine de Proust.

She said a recent trip to Paris had provided “a lot of inspiration”, and that from this month the patisserie would begin expanding its range of pastries.

The name Madeleine de Proust comes from the French expression referring to sounds, tastes or smells that trigger vivid, nostalgic memories.

For Hyoju, her own madeleine



de Proust is the memory of her mother baking cookies after school, filling their home with the smell of “heavenly” biscuits.

The aroma of madeleines evokes a similar feeling of nostalgia for Hyoju, and it is also what greets customers when they step inside the Carlton patisserie.

Madeleine de Proust is located at 253 Lygon St, Carlton, and is typically open from 9am to 3.30pm, Wednesday to Sunday. ●

### CARLTON COMMUNITY HISTORY GROUP

## Memorial to Australians in the Spanish Civil War

In the courtyard of the Melbourne Trades Hall in Lygon St, Carlton, there is an unusual war memorial – a monument commemorating the Australians who fought as volunteers in the Spanish Civil War (1936 – 1939).

WORDS BY JEFF ATKINSON

When civil war broke out in Spain in 1936, it had little relevance for the majority of Australians. However, there were some for whom it was of intense interest. In Spain, the right-wing Nationalist government led by General Franco was receiving aid and troops from Fascist Italy and Nazi Germany, while the left-wing Republican rebels were being assisted by the Soviet Union and the volunteers of the International Brigades.

Here in Melbourne, the Catholic Church and others saw the war as a fight against international communism and supported the nationalist government, while leftists saw it as a fight against fascism and supported the republican cause.

These differences were acutely



manifested at a meeting held in Melbourne University on March 22, 1937, to debate the question: “Is the Spanish Government the ruin of Spain?”

The event had been well publicised, and around a thousand students and visitors crowded into the Public Lecture Theatre to hear two teams debate. Feelings ran high from the beginning, and the meeting quickly became heated and rowdy.

Speakers both from sides were constantly interrupted by hecklers. A number

of students caused interruptions by running around on the roof over the lecture theatre, creating so much noise that the speakers could not be heard.

Others attempted to run fire hoses in from the corridors and turn them on the meeting, but these were checked by the police who were present. At the end of the meeting, the motion was put to the house and was carried with prolonged applause.

The Spanish Civil War attracted interest and support from leftists all around the world, and thousands volunteered to go to Spain and fight for the republican cause in one of the international brigades.

Among them were at least 72 men and women from Australia, whose names are listed on a bronze plaque on the memorial at Trades Hall. They tended to be trade unionist activists and/or Communists with an interest in international affairs.

The men who went to Spain either served as soldiers or worked in logistical roles, while the women volunteers worked as nurses, doctors, translators and in administrative support roles. It is thought that around 16 of the Australian volunteers were killed in action in Spain.

The Spanish Civil War came to an end in early 1939 with General Franco and the Nationalist forces victorious and the Republicans defeated. The violence from both sides left at least 500,000 people dead. ●

## Parkville balances growth, heritage and community

The quarterly meeting of the Presidents of Residents took place with the Lord Mayor Nick Reece, some City of Melbourne councillors, and officers, on June 4.

**WORDS BY**  
RAY OSBORNE – PRESIDENT

This is a forum where key issues concerning areas of Melbourne city, are raised for discussion. It offers an opportunity to exchange experience across the city.

Unsurprisingly, there were common issues, such as traffic, and parking. But there were also some matters particular to some parts of the city, such as residents' safety and homelessness. The Lord Mayor briefed us on particular budget initiatives aimed at specifically addressing these issues.

While a substantial portion of the University of Melbourne campus lies within Parkville, the suburb is also the home of the Monash University Faculty of Pharmacy and Pharmaceutical Sciences.

Founded in 1881 as the School of the Pharmaceutical Society of Victoria, it relocated in 1960 to purpose-designed buildings north of Walker Street. In 1992 it became part of Monash University and makes another important contribution to the vitality of Parkville.

At 343 Royal Parade, Monash University is completing the revitalisation and repurposing of a former CSIRO building to house the Monash Institute of Pharmaceutical Sciences. It is an example of recycling a building to meet current building standards and sustainability. The project also demonstrates how critical tree protection zones are during construction. Their use has avoided damage occurring to the State Heritage Registered Elm Avenue.

Street trees make a vital contribution to the visual amenity of Parkville. Unfortunately, for a few weeks each year,

however, there is a downside. Some gutters are blocked by leaves, and piles of damp leaves appear on the footpaths, and in front gardens. Despite sterling efforts by the City of Melbourne contractors, one gusty day and/or major downpour temporarily undoes their good works. Yet the upside of these avenues of trees throughout the suburb, clearly outweighs these short periods of inconvenience. While winter has arrived, a brief period of mild weather has seen the jonquils and daffodils out in bloom.

With a mind on the upcoming 60th anniversary of the Parkville Association in 2027, a visit was made to the Association's records held at Melbourne University Archives. There are 50 boxes of documents, forming a number of sessions made since the first in 1988. While some deposits have been fully listed, others have not, and finding resources to address this issue will be the subject of further discussions with Melbourne University Archives and the Parkville Association Committee. This issue is not unique to the Parkville Association.

Another celebration in Parkville this year is the 140th anniversary of Janet Clarke Hall (JCH). "Founded in 1886 as Trinity Women's Hostel and renamed in 1921 for its first benefactor Janet, Lady Clarke, it was the first university residential college for women in Australia – created to open doors to higher education for those previously excluded from it. What began as a pioneering home for women scholars has evolved into a co-educational college that continues to champion the same founding ideals of access, equity and intellectual curiosity" (JCH website).

To mark this milestone, on Sunday, June 28, 2026, Janet Clarke Hall held an event to celebrate and commemorated this foundation. As an example of the close relationship that has been developed with the College an invitation to attend was extended to members of the Parkville Association and families.

Just a reminder that joining the Parkville Association will be free until June 30, 2027, on a "try before you buy" basis. An increasing number of residents have taken advantage of this offer. Membership applications can be made via [parkvilleassociation.org.com](http://parkvilleassociation.org.com) ●

## Budget – a done deal

At the invitation of the City of Melbourne the Carlton Residents' Association (CRA) made several submissions for the 2026 Council Budget. Around 500 submissions, including those from the CRA, were made.

**WORDS BY**  
MARISA DOYLE AND PETER SANDERS

The council responded to our submissions generally noting where action would be undertaken. Although these were sometimes generic responses, it was noted that CRA would be involved in any planning for each issue.

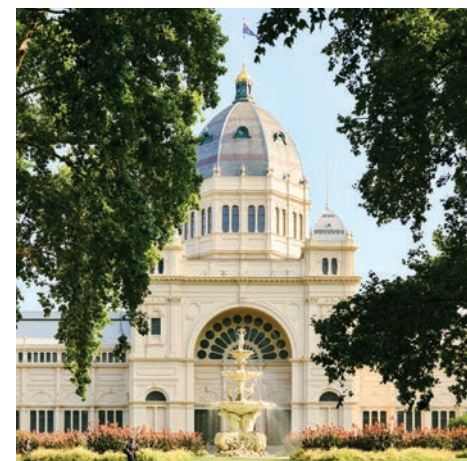
The CRA submissions included the need for action to upgrade Lygon St, protect the heritage-listed Royal Exhibition Building and Carlton Gardens, and alleviate growing noise and pressure on Carlton streets following the opening of the West Gate Tunnel.

The latter has resulted in a significant increase in heavy vehicle traffic, thundering along the main arterial roads and the problem has been shifted, with no pre-planning thought given to the impact on Carlton (or indeed Kensington).

One submission also asked for serious consideration and feasibility studies for new and expanded green space in the suburb, to ensure it remains a liveable and walkable place for the community and its many visitors.

While we appreciate that we will be involved in the various planning and action processes arising from the budget allocations we have some concerns. Submissions to the draft budget were invited in March/April, leaving only a short time frame for the council to cost and assess all proposals before committee hearings in May and the adoption of the budget in late May.

Consequently, was there time to adequately assess and include worthy submissions? For example, despite the CRA asking for increased green spaces funding there is no allocation for Carlton other than for University Square and areas around the new Parkville Station. How many other



submissions were actually incorporated into the final budget we wonder?

Budget items, detailed in the huge and largely non-suburb-specific council budget plan, are also mainly city wide without specific allocations to areas such as Carlton. How are these allocations made? Are they fair and equitable? Are we missing direct advocacy in council for suburbs outside the CBD as a result of the heavily skewed vote allocation to businesses? What is the decision-making process and how is it influenced? How can we gain more transparency? Is consideration given to per resident per hectare investment in new greening activity? Can a specific clear amount of our rates be cordoned and visible for use on new space, upgrades, canopy and proposals for pocket parks?

Despite the City of Melbourne being a wealthy council, there are relative budget cuts that seem harsh for Carlton. Reachable and per resident green space in Carlton is below accepted global benchmarks, yet this now final budget delivers no new open green space for Carlton.

This could lock in a longer-term under-provision of canopy and outdoor areas for this growing community. There is also a precinct activation fund for another suburb, surely Lygon St would benefit from a similar allocation?

We urge the council, from next year, to invite submissions some months before decisions are made and the budget is locked in. The community, including CRA, must be involved with the budget process and clearly informed as to how our submissions will or will not be included. ●

## STATE MP

## Melburnians loved free PT. Let's make it permanent

Melburnians loved free public transport. When public transport was free for two months, the number of people using it jumped by 20 per cent.

Tens of thousands more people hopped on a bus, tram or train instead of getting in the car. It was good for our roads, good for our environment, and good for our wallets.

So why is the Labor Government already walking away from it and putting fares back up?

Free public transport isn't a fringe idea. In Queensland you can catch a train or bus for 50 cents – permanently! Tasmania has free public transport right through to June 2027. There's no reason why Victoria can't have the same.

It makes a lot of sense – especially if you

compare it to what Labor already spends on roads. The cost of the North East Link alone could fund free public transport the whole of Victoria for 25 years! One toll road, or a generation of free travel for every Victorian? Labor chose the toll road, but we think free public transport is a better deal.

The savings for households speak for themselves: free PT would save the average Victorian more than \$220 a month.

It's also not just about scrapping fares. It's about frequency and accessibility. A free trip means nothing if the bus or train never turns up or you can't get on the tram because it's not accessible. The Greens' plan pairs free PT with the frequent, accessible, reliable services Victorians can actually build their lives around.

And the good news is we can pay for all of it by finally making big corporations pay their fair share of tax. Rather than leaving everyday Victorians to foot the bill while toll road companies bank the profits.

Free, frequent, accessible public transport is exactly the kind of change we're told is impossible, until all of a sudden it isn't. Labor and Liberal policy has too often been shaped by the priorities of their big corporate donors, including toll road companies. We can demand better than the meagre offerings from the old major parties.

If you want to join me, add your voice to our petition on [ellensandell.com/issue/freetpt](http://ellensandell.com/issue/freetpt) or reach out to my office on [office@ellensandell.com](mailto:office@ellensandell.com) ●

**Ellen Sandell**

STATE MP FOR MELBOURNE

[OFFICE@ELLENSANDELL.COM](mailto:OFFICE@ELLENSANDELL.COM)



Quiz



- Which country hosted the first Commonwealth Games in 1930?
- What is the name of Crowne Plaza Carlton's new restaurant?
- Author Lynley Dodd is best known for her books about which canine character?
- Which East Melbourne church recently had plans approved by the City of Melbourne for a redevelopment?
- Who were the two lead actors in the 1978 film *Grease*?
- Willis-Ekbom Disease is more commonly known by what name?
- What Australian tree is currently the subject of a new exhibition at the Potter Museum in Parkville?
- The chequered markings on emergency service vehicles are named after which patterned cake?
- Chloë Sevigny (pictured) played Nicolette Grant in which drama TV series about Mormon fundamentalism?
- What major East Melbourne park is currently the subject of a new master plan?
- Which Carlton cinema will host screenings during this year's Melbourne International Film Festival?
- Which Carlton landmark hosted celebrations marking 125 years since the opening of Australia's first federal parliament?

QUIZ SOLUTIONS

- Canada 2. Fico 3. Harry Maclary
- St Nicholas Church 5. John Travolta and Olivia Newton-John 6. Restless legs syndrome 7. Gum tree 8. Battenberg cake
- Big Love 10. Yarra Park 11. Cinema Nova 12. The Royal Exhibition Building

5x5

No. 325

Insert the missing letters to make 10 words – five reading across the grid and five reading down.

B		E		D
	E		U	
A		E		T
	E		S	
S		Y		R

SOLUTIONS

BLEND, REVUE, AVERT, TERSE, SYLER

PUZZLES AND PAGINATION  
©PAGEMASTERS PTY LTD  
PAGEMASTERS.COM July, 2026

Sudoku

No. 060

Fill in the blank cells using the numbers from 1 to 9. Each number can only appear once in each row, column and 3x3 block

EASY

		6	2					
				3		9	8	
	3	7		5	8	2	6	
	4					5		
1			3	7	4			2
		9						3
	1	3	7	4		8	5	
	7	5		1				
					5	7		

HARD

4		7	2					6
8				7	9			
	9			5	4			7
1								
		4	5		3	7		
								5
3	8		6				1	
			1	2				8
7					5	9		2

SOLUTIONS

EASY

6	9	8	4	8	4	9	6	9
8	7	5	9	1	3	7	8	8
2	1	3	7	4	7	5	1	4
9	6	8	5	8	5	9	7	5
7	6	9	8	5	8	4	4	5
1	5	8	3	8	7	4	6	9
2	1	5	8	3	7	4	6	9
3	4	2	1	6	9	6	5	7
4	2	1	6	3	7	8	9	8
5	8	6	2	9	1	3	4	7

HARD

7	4	1	3	8	5	9	6	2
5	6	9	1	2	2	1	4	4
3	2	4	4	7	6	9	6	5
9	3	2	7	1	6	8	4	4
6	8	4	5	5	8	7	2	1
1	7	5	8	4	4	2	2	5
2	9	3	3	6	5	1	4	8
8	1	6	4	7	9	2	5	3
4	5	7	2	3	8	1	9	6

Wordfind

Theme: Peru

The leftover letters will spell out a secret message.

A	L	A	T	O	C	A	E	T	I	O
M	N	Y	S	O	C	C	H	F	A	M
A	M	A	E	Q	U	O	C	A	C	C
Z	O	C	R	U	S	N	I	A	A	C
O	N	U	O	I	C	D	V	C	P	A
N	K	C	F	N	O	O	E	Z	L	C
H	E	H	N	O	U	R	C	A	A	T
P	Y	O	I	A	I	C	C	N	H	U
S	N	I	A	T	N	U	O	M	U	S
A	M	E	R	I	C	A	N	D	E	S
M	O	C	H	E	J	A	G	U	A	R

- |          |            |
|----------|------------|
| ALPACA   | CUSCO      |
| AMAZON   | JAGUAR     |
| AMERICA  | MOCHE      |
| ANDES    | MONKEY     |
| AYACUCHO | MOUNTAINS  |
| CACTUS   | NAZCA      |
| CEVICHE  | QUINOA     |
| CONDOR   | RAINFOREST |

Secret message: Location of Machu Picchu

Crossword

No. 060

ACROSS

- Suggests (7)
- Expressing much in few words (7)
- Terrific (9)
- Caribbean Sea island (5)
- Sequence (6)
- Becoming prominent (8)
- Red wine (6)
- Most important; major (4)
- Not false (4)
- Commercial (6)
- Self-government (8)
- Water-surrounded land mass (6)
- Florida port (5)
- From Oslo, e.g. (9)
- Sources of light made with wax (7)
- Traditions (7)

1		2		3		4		5		6		7		8
9										10				
11						12								
						13								
14														
15														
16		17									18			
19						20								
						21							22	23
24										25				
27						28								
29										30				

DOWN

- Brew; steep (6)
- Food cupboard (6)
- Female name (8)
- Places oneself on a chair (4)
- Railway vehicle (10)
- Objects for sitting (6)
- Maritime (8)
- Replenishing (a battery) (8)
- Medications given to a patient (10)
- Second largest ocean in the world (8)
- Large Australian spider (8)
- Members of a trust (8)
- Encompass (6)
- Gambling house (6)
- Ancient Greek figure of beauty (6)
- Australian actor - Bana (4)

SOLUTION

S	M	O	I	S	N	O	C	S	E	T	I	N	A	V	O
I	N	E	I	L	I	Y	I								
N	I	G	E	M	R	O	N	Y	A	N	V	I			
O	S	I	E	E	I	S	N								
G	N	V	I	S	I	A	W	O	N	O	I	N	V		
V	O	C	N	E	I	E	N	I							
I	R	E	A	G	V										
G	L	I	E	E	H	V									
N	I	W	I	L	E	V	O	C							
I	C	S	O	I	T	A	E								
G	N	I	O	E	W	E	B	E	S	I	N	V			
R	I	I	O	S	E	I	P								
V	B	R	V	O	I	S	V	N	V						
H	V	H	O	I	S	V	N								
C	I	N	O	C	V	T	S	E	I	P	M	I			

Codeword

No.030

		13		23		13		21		11		5		
25	C	24	15	16	23	3	18	10	15	24	8	21	2	
		2		21		4		9		12		15		
25	C	3	21	18	21	14	14	21		12	23	23	22	
				21		4		10		21		17		
21	7	24	10	4	14	9		24	10	22	4	8		
	21				9		5				10			
4	14	10	21	17		25	3	23	13	10	21	15		
	9		17			11		18		24				
3	21	22	5			4	14	2	25	C	15	4	16	21
		26		21		26		4		22		23		
6	19	24	20	4	26	F	4	25	C	24	8	4	23	14
	20		2		18		2		3		1			

SOLUTIONS

N	R	B	X	Y	U	L	E	M	O	A	C	F		
14	15	16	17	18	19	20	21	22	23	24	25	26		
1	2	3	4	5	6	7	8	9	10	11	12	13		

1	14
2	15
3	16
4	17
5	18
6	19
7	20
8	21
9	22
10	23
11	24
12	25
13	26

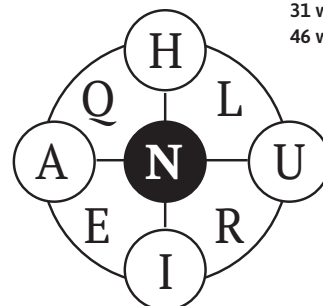
9-Letter

No. 060

Today's Focus:

- 20 words: Good
- 31 words: Very good
- 46 words: Excellent

Using the nine letters in the grid, how many words of four letters or more can you list? The centre letter must be included and each letter may only be used once. No colloquial or foreign words. No capitalised nouns, apostrophes or plural nouns ending in 's'.

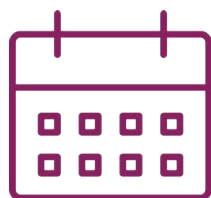


Reference: Macquarie Dictionary

SOLUTIONS

alien, anil, anile, earn, elan, HARLEQUIN, hernia, hernial, hinau, inhale, inhaler, inhaul, inhaled, inure, lain, lane, larvae, lean, learn, lien, line, linear, linear, lunge, nail, nartu, near, neural, quern, quin, rain, rani, rein, renal, rhinal, ruin, rune, uhlau, ulan, ulna, ulnae, unhair, unreal, urinal, urine

# WHAT'S ON July



Experience the inner city buzz this month with festivals, workshops, exhibitions and more.



### MOULD X PINOT PALOOZA

Following last year's success, the popular cheese and pinot celebration returns, bringing together artisan producers, great flavours and food lovers.

Melbourne Convention & Exhibition Ctr

3 – 5 JULY, 11AM – 3PM



### ALCHEMY: HOLIDAY PROGRAM

Young writers aged 8–12 can explore magical worlds, invent spellbinding characters and create enchanting stories in this fun, alchemy-themed creative writing workshop.

Story Studios Australia, Carlton

THURSDAY 9 JULY, 9AM – 3PM



### MSDX: IN THE MAKING

Design is changing – and so are we all. At the University of Melbourne's School of Design, you're invited to take a rare behind-the-scenes look at how our built environment gets made.

Glyn Davis Building, Parkville

UNTIL 10 JULY, 10AM – 7PM



### ROAD TO ZERO'S BIG (SAFE) CARDBOARD CAR

Kids can enjoy free hands-on activities exploring vehicle safety features, while adults test their car safety knowledge using TAC's vehicle safety tools.

Melbourne Museum, Carlton

UNTIL 11 JULY, 10AM – 3PM



### BINGO FUN NIGHT

Celebrate the end of NAIDOC Week at the First Nations Women's Collective bingo and disco fundraiser, featuring games, prizes, laughter and community connection.

Kathleen Syme Library, Carlton

SATURDAY 11 JULY, 5PM – 8.30PM

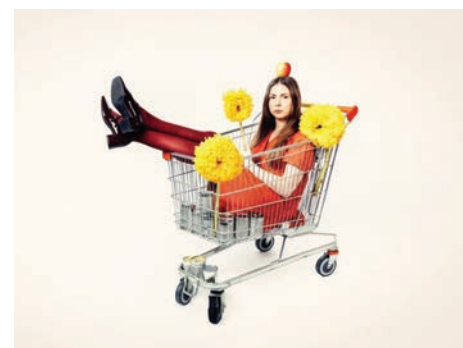


### LIGHTSCAPE

Lightscape returns to Royal Botanic Gardens Melbourne, transforming the gardens with stunning light installations, interactive artworks, music, and food experiences in a magical winter setting.

Royal Botanic Gardens, Melbourne

UNTIL 2 AUGUST, 5.15PM – 8PM



### LA MAMA EXPLORATIONS

La Mama Explorations 2026 showcases 52 bold new works-in-progress, offering audiences an early look at innovative future theatre productions.

La Mama HQ, 205 Faraday St, Carlton

UNTIL 30 AUGUST, 7.30PM – 9PM



### MELBOURNE SUNRISE HOT AIR BALLOON FLIGHT

Experience Melbourne from above with a sunrise hot air balloon flight, soaring over iconic landmarks before enjoying breakfast and extras.

Pullman Melbourne On The Park

UNTIL 31 AUGUST, 4.30AM – 9AM



### FITZROY GARDENS HERITAGE TOUR

Fitzroy Gardens tour showcases historic landmarks, wildlife, and formal gardens in an accessible Melbourne experience blending nature, history, and beauty.

Fitzroy Gardens, East Melbourne

UNTIL 31 DECEMBER, 2PM – 3PM



### SONGBIRDS

Songs, rhymes and stories will engage your budding bookworm's mind and introduce them to the fun and rhythm of language. Age: newborn to 18 months.

East Melbourne Library

UNTIL 10 DECEMBER, 10.30AM – 11AM



### SWINGING 60s

This exhibition explores 1960s Victoria, showcasing music, fashion, protest items, instruments, and Barbie memorabilia, highlighting youth culture, rebellion, and social change.

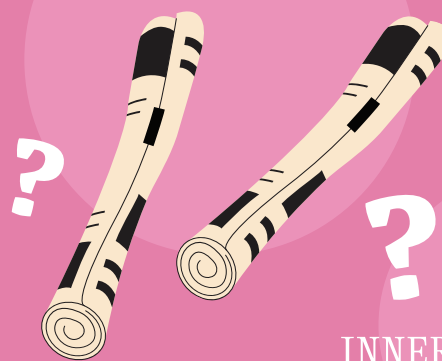
Old Treasury Building, East Melbourne

UNTIL DECEMBER, 10AM – 4PM

# Thinking about advertising your business?

Contact us to tailor your next campaign

8689 7980 | admin@hyperlocalnews.com.au



INNER CITY NEWS

ADVERTISEMENT  
Your City of Melbourne community update

Images by  
@chalkakfilm

# Our City Our Stories



*Scan to subscribe for the stories  
that matter to Melbourne*

[news.melbourne.vic.gov.au](https://news.melbourne.vic.gov.au)



CITY OF MELBOURNE